

Notes
 The Contractor is responsible for confirming and correcting dimensions at the job site; the means, methods, techniques, sequences, or procedures for construction; and for safety precautions in connection with the Project.

SAM BURCH
 ARCHITECT

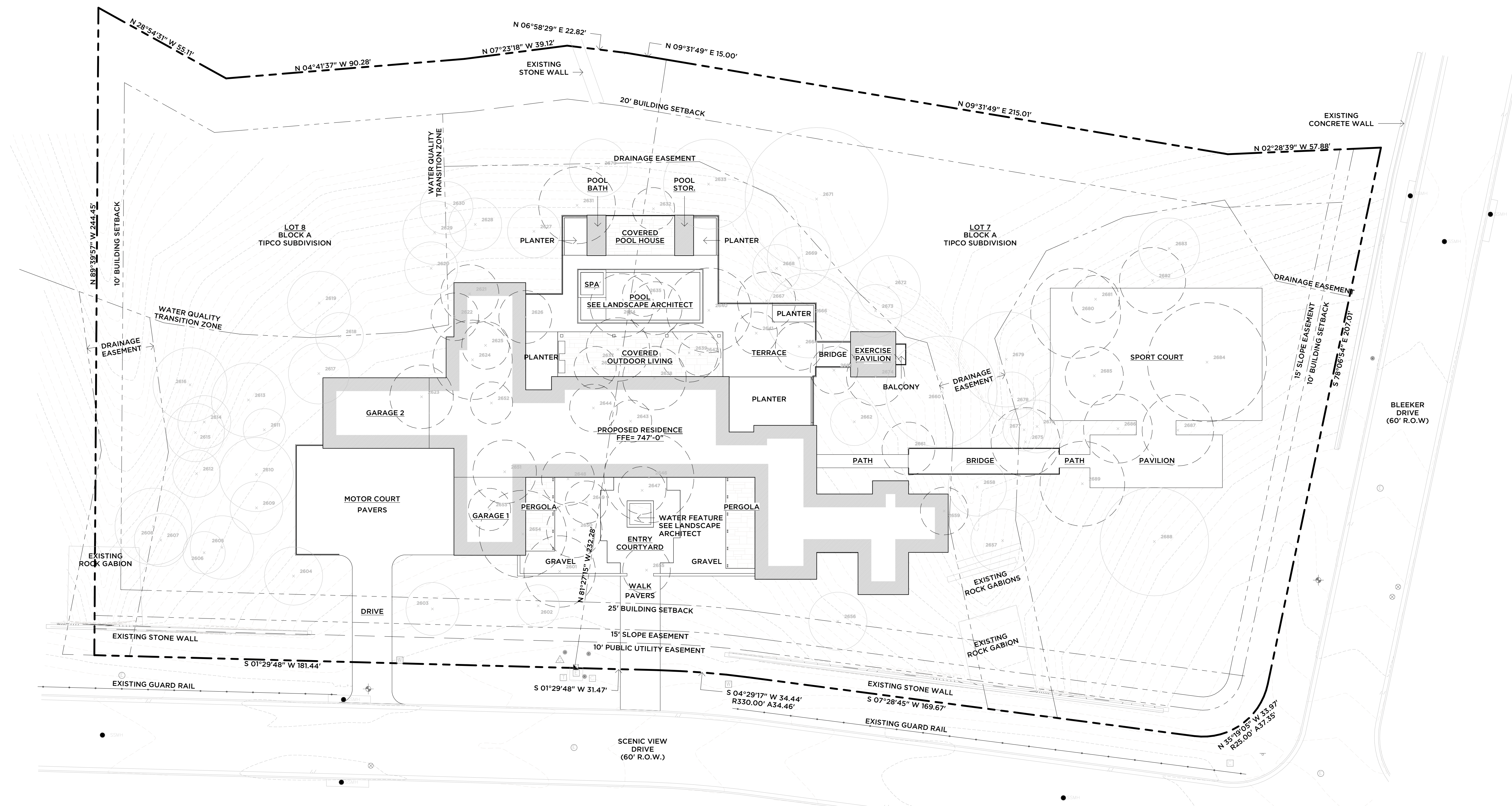
PRELIMINARY
 NOT FOR REGULATORY
 APPROVAL, PERMITTING, OR
 CONSTRUCTION

5705 Scenic View Residence
 5705 Scenic View Drive
 Austin, Texas

Preliminary Design

Site Plan

Issue Date
 02/26/21
 Scale
 1" = 20'-0" **A-2.0**



1 Site Plan
 SCALE: 1" = 20'-0"

TREE LIST			LEGAL DESCRIPTION	TREE PROTECTION NOTES	NOTES
2601 CEDAR 11 5	TO BE REMOVED	2654 CEDAR 12	TO BE REMOVED	2668 CEDAR 9	1. SEE LANDSCAPE ARCHITECT FOR ALL GRADING, DRAINAGE, WATER RETENTION AND DRAIN INLET/OUTLET LOCATIONS.
2603 LIVE OAK 10		2655 CEDAR 8	TO BE REMOVED	2669 CEDAR 9 6	
2604 CEDAR 11		2656 RED OAK 10	TO BE REMOVED	2670 CEDAR 11	2. NEW ELECTRICAL SERVICE TO HOUSE SHALL BE BURIED PRIOR TO ANY MOBILIZATION ON SITE.
2605 CEDAR 16		2657 RED OAK 12	TO BE REMOVED	2671 CEDAR 16 8 7 7	
2606 CEDAR 8		2658 CEDAR 12	TO BE REMOVED	2672 CEDAR 12	3. PROVIDE TREE PROTECTION INCLUDING AROUND TRUNKS AND AT 50% CRITICAL ROOT ZONES AS REQUIRED.
2607 CEDAR 10		2659 CEDAR 11	TO BE REMOVED	2673 CEDAR 10	
2608 CEDAR 10 5 4		2660 CEDAR 16	TO BE REMOVED	2674 CEDAR 11	4. THE CONTRACTOR SHALL MAINTAIN THE HEALTH OF ALL TREES DURING THE COURSE OF CONSTRUCTION.
2609 CEDAR 8 4		2661 CEDAR 8	TO BE REMOVED	2675 CEDAR 9 4 4	
2610 CEDAR 9 6 4		2662 CEDAR 8	TO BE REMOVED	2676 CEDAR 10	5. VERIFY ALL HARDSCAPE INCLUDING DRIVES, PARKING AREAS, WALLS, STEPS AND WALKS WITH LANDSCAPE ARCHITECT.
2611 CEDAR 8		2663 CEDAR 8	TO BE REMOVED	2677 CEDAR 8	
2612 CEDAR 9		2664 CEDAR 9	TO BE REMOVED	2678 CEDAR 9	6. VERIFY POOL AND SPA INCLUDING EQUIPMENT LOCATIONS WITH LANDSCAPE ARCHITECT.
2613 CEDAR 10 8		2665 CEDAR 8	TO BE REMOVED	2679 CEDAR 18	
2614 CEDAR 10		2666 CEDAR 8	TO BE REMOVED	2680 CEDAR 17	7. THE CONTRACTOR IS ENCOURAGED TO HIRE A WATERPROOFING CONSULTANT TO DIRECT THE MEANS AND METHODS OF WATERPROOFING ALL PORTIONS OF THE PROJECT.
2615 CEDAR 11		2667 CEDAR 9	TO BE REMOVED	2681 CEDAR 9	
2616 LIVE OAK 14		2668 CEDAR 17	TO BE REMOVED	2682 CEDAR 9 7	
2617 RED OAK 8 7		2669 CEDAR 9	TO BE REMOVED	2683 CEDAR 8 7	
2618 CEDAR 9		2670 CEDAR 10	TO BE REMOVED	2684 CEDAR 9 8 7 6 6	
2619 CEDAR 12		2671 CEDAR 16 8 7 7	TO BE REMOVED	2685 CEDAR 8 6	
2620 CEDAR 10		2672 CEDAR 12	TO BE REMOVED	2686 CEDAR 10 6	
2621 CEDAR 11	TO BE REMOVED	2673 CEDAR 10	TO BE REMOVED	2687 CEDAR 11 5	
2622 CEDAR 9	TO BE REMOVED	2674 CEDAR 11	TO BE REMOVED	2688 CEDAR 10 6 5 4	
2623 CEDAR 12	TO BE REMOVED	2675 CEDAR 9 4 4	TO BE REMOVED	2689 CEDAR 9 5 5 4	
2624 RED OAK 12 6	TO BE REMOVED	2676 CEDAR 10	TO BE REMOVED		
2625 CEDAR 9	TO BE REMOVED	2677 CEDAR 8	TO BE REMOVED		
2626 CEDAR 10	TO BE REMOVED	2678 CEDAR 9	TO BE REMOVED		
2627 CEDAR 10	TO BE REMOVED	2679 CEDAR 18	TO BE REMOVED		
2628 CEDAR 10	TO BE REMOVED	2680 CEDAR 17	TO BE REMOVED		
2629 CEDAR 12	TO BE REMOVED	2681 CEDAR 9	TO BE REMOVED		
2630 CEDAR 10	TO BE REMOVED	2682 CEDAR 9 7	TO BE REMOVED		
2631 CEDAR 11 7	TO BE REMOVED	2683 CEDAR 8 7	TO BE REMOVED		
2632 CEDAR 8	TO BE REMOVED	2684 CEDAR 9 8 7 6 6	TO BE REMOVED		
2633 CEDAR 17	TO BE REMOVED	2685 CEDAR 8 6	TO BE REMOVED		
		2686 CEDAR 10 6	TO BE REMOVED		
		2687 CEDAR 11 5	TO BE REMOVED		
		2688 CEDAR 10 6 5 4	TO BE REMOVED		
		2689 CEDAR 9 5 5 4	TO BE REMOVED		